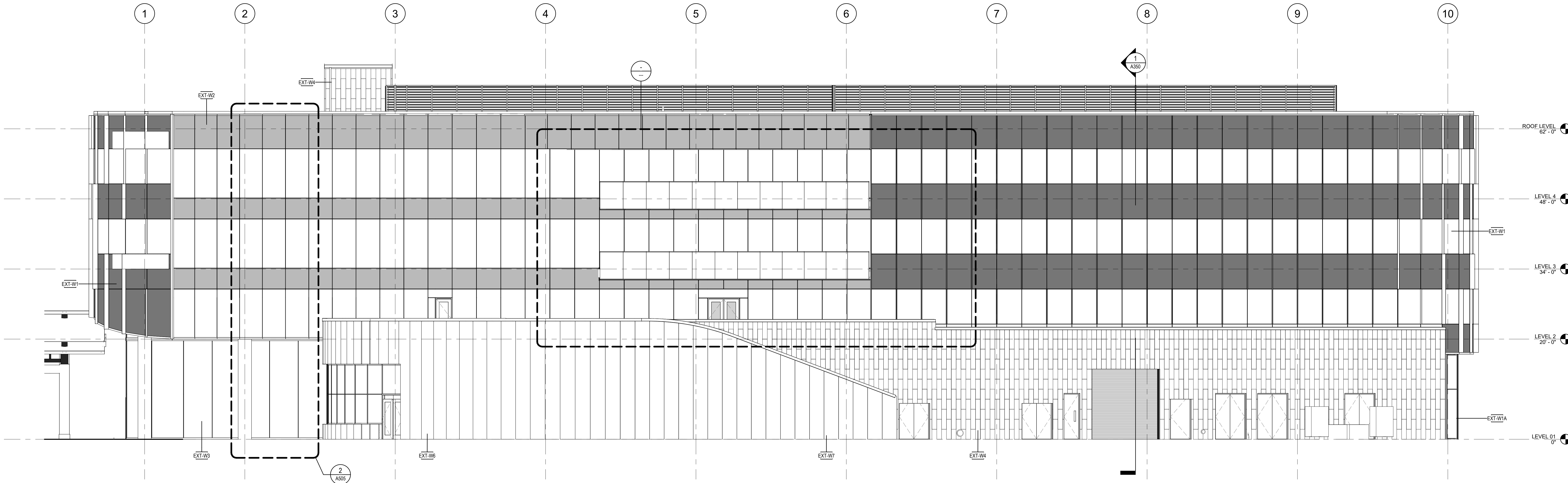
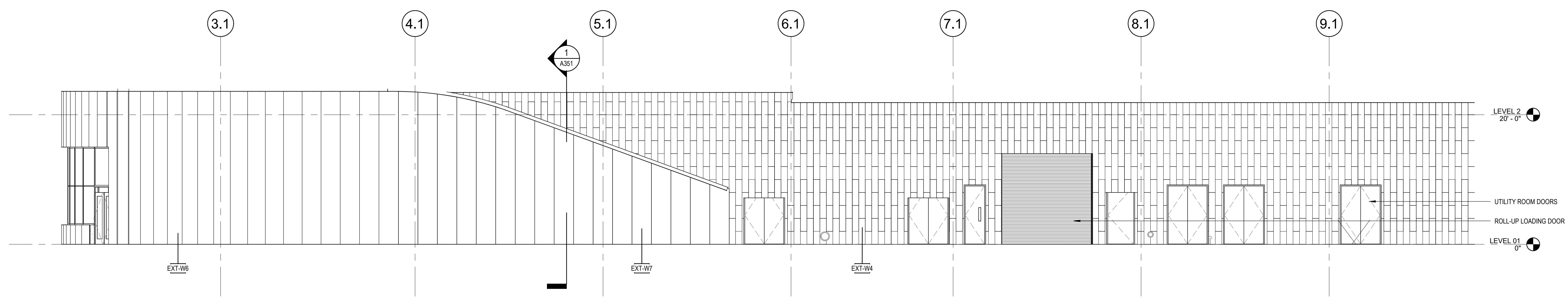




3 BUILDING ELEVATION - NORTH  
1/8" = 1'-0"



2 BUILDING ELEVATION - WEST  
1/8" = 1'-0"



1 PODIUM ELEVATION - WEST  
1/8" = 1'-0"

COLOR	EXTERIOR GLAZING TYPES
	GL-01 VISION
	GL-02 SPANDREL
	GL-03 VISION
	GL-04 SPANDREL
	GL-05 LOW-IRON VISION
	MTP-01 GLAZED-IN METAL PANEL

EXTERIOR ASSEMBLIES	
TYPE	DESCRIPTION
EXT-F1	CONCRETE SLAB ON GRADE, CONCRETE SLAB (REFER TO STRUCTURAL), VB-01 VAPOR BARRIER.
EXT-R1	KEE ROOF ASSEMBLY (HIGH ROOF), RS-01 ROOFING MEMBRANE, 5/8" EXTERIOR COVERBOARD SHEATHING, INS-01C2 4" RIGID INSULATION (R20 MINIMUM).
EXT-R2	PAVER ASSEMBLY AT AMENITY TERRACE, PAV-01 PAVER TILES, RS-02 MIAM ECHO ROOF SYSTEM, 2PLY COLD APPLIED ROOFING MEMBRANE, 1/2" EXTERIOR CEMENT BOARD SHEATHING, INS-01C2 TAPERED RIGID INSULATION - 4" MIN AT LOW POINT (R20 MIN), 4" MIN AT LOW POINT (R20 MIN), WATERPROOFING MEMBRANE/VAPOR BARRIER.
EXT-R3	PLANTING ASSEMBLY AT AMENITY TERRACE, PLANTING MEDIUM, RS-03 MIAM ECHO ROOF SYSTEM, 2PLY COLD APPLIED ROOFING MEMBRANE, INS-01C2 TAPERED RIGID INSULATION - 4" MIN AT LOW POINT (R20 MIN), 4" MIN AT LOW POINT (R20 MIN), WATERPROOFING MEMBRANE/VAPOR BARRIER.
EXT-R4	STANDING SEAM ROOF ASSEMBLY (LOW ROOF), RS-04 STANDING SEAM ROOF, SELF-ADHERING UNDERLAYMENT, 5/8" EXTERIOR COVERBOARD SHEATHING, INS-01C2 TAPERED RIGID INSULATION - 4" MIN AT LOW POINT (R20 MIN), 4" MIN AT LOW POINT (R20 MIN), WATERPROOFING MEMBRANE/VAPOR BARRIER.
EXT-S1	VENTILATED SOFFIT ASSEMBLY (TYPICAL), MTP-03 LONGBOARD V-GROOVE 6" PERFORATED METAL SOFFIT, 3 5/8" CFMF.
EXT-W1	TYPICAL CURTAIN WALL - STANDARD GLAZING, EWG-01 TYP MULLION (ES WINDOWS GW-7000), GL-01 GLAZING (BLUE), GL-02 SPANDREL, INS-03A MINERAL WOOL INSULATION BOARD.
EXT-W1A	TYPICAL CURTAIN WALL - STANDARD GLAZING, EWG-01 TYP MULLION (ES WINDOWS GW-7000), GL-01 GLAZING (BLUE), MTP-01 GLAZED-IN METAL PANEL, INS-03A MINERAL WOOL INSULATION BOARD.
EXT-W2	TYPICAL CURTAIN WALL - "CARVE" GLAZING, EWG-02 TYP MULLION (ES WINDOWS GW-7000), GL-03 GLAZING (CLEAR), GL-04 SPANDREL, INS-03A MINERAL WOOL INSULATION BOARD.
EXT-W3	MONUMENTAL GLAZING, EWG-06 GLASS FIN MULLION (VETRAFIN), GL-05 LOW-IRON GLAZING (ULTRACLEAR).
EXT-W4	GFRG ON CMU - INSULATED (SERVICE FROD), LHC-P01 SWISSPEARL, 12" x 48" VERTICAL RUNNING BOND, VERTICAL FURRING CHANNEL, HORIZONTAL FURRING CHANNEL, FLUID-APPLIED AIR BARRIER, CMU-01 8" CMU.
EXT-W5	GFRG ON CMU - UNINSULATED (SERVICE FROD), LHC-P01 SWISSPEARL, 12" x 48" VERTICAL RUNNING BOND, VERTICAL FURRING CHANNEL, HORIZONTAL FURRING CHANNEL, FLUID-APPLIED AIR BARRIER, CMU-01 8" CMU.
EXT-W6	SCALLOPED GFRG ON CMU - INSULATED (CHAMBERS), FRC-01 SCALLOPED GFRG (3" PANEL WIDTH, 5/8" RADIUS), 2 CHANNEL (VERTICAL), HYBRID COMPOSITE METAL, GRT (HORIZONTAL), INS-03A 2" MINERAL WOOL INSULATION BOARD - CONTINUOUS (RS-7), FLUID-APPLIED AIR BARRIER, 5/8" EXTERIOR SHEATHING, 8" CFMF, INS-05C 3/2" MINERAL WOOL BATT INSULATION (R13 MINIMUM).
EXT-W7	SCALLOPED GFRG ON CMU - UNINSULATED (EXTERIOR STAIR), FRC-01 SCALLOPED GFRG (3" PANEL WIDTH, 5/8" RADIUS), VERTICAL FURRING CHANNEL, HORIZONTAL FURRING CHANNEL, FLUID-APPLIED AIR BARRIER, CMU-02 8" CMU (CROTTED), ADDITIONAL FLUID-APPLIED AIR BARRIER, HORIZONTAL FURRING CHANNEL, VERTICAL FURRING CHANNEL, LHC-P01 SWISSPEARL, 12" x 48" VERTICAL RUNNING BOND.



Project  
**Pompano Beach City Hall & Parking Garage**  
125 Dixie HWY, Pompano Beach, FL 33060 USA

Client  
**RocaPoint Partners**

Prepared For  
**City Of Pompano Beach**  
100 West Atlantic Boulevard,  
Pompano Beach, Florida 33060

**h+k**  
Heilmuth, Obata & Kassabaum, Inc.  
124 Giralda Avenue, Suite 100  
Coral Gables, FL 33134 USA  
t +1 786 539 0800  
www.hok.com/studios/miami

Qualifying Agent, Jonathan Rae - FL Reg. No. AR02342

All reproduction & related property rights reserved © 2025  
In Association with

**TIA**  
TIA CONSULTING  
Thia Consulting, Inc.  
Pompano  
40 NW 3rd Street, Suite 1102  
Miami, FL 33129  
T: 305 582 7123  
www.thiaconsulting.com

**Hammond & Associates INC**  
Mechanical, Fire Protection  
489 N.W. 10th Ave, Suite 215  
Fort Lauderdale, FL 33311  
PH: 561 327 7111  
www.hammondengineers.com

**KNL**  
Kugler Ning Lighting, Inc.  
Lighting design  
247 West 57th Street Suite 1502  
New York, NY 10018  
www.kuglerlighting.com

**SOCOTEC**  
SOCOTEC Life Safety, LLC  
Life Safety  
1360 W Peachtree St NW Suite #1010  
Atlanta, GA 30309  
www.socotec.us

**VDA**  
VDA, Inc.  
Vertical Transportation  
1000 West McAlister Road, Suite 209  
Pompano Beach, FL 33069

**BAC**  
Brooks Acoustics  
Acoustics  
49 N. Federal Highway, #121  
Pompano Beach, FL 33062

**NOT FOR CONSTRUCTION**

No.	Description	Date
50%	SCHEMATIC DESIGN	10/10/2025
100%	SCHEMATIC DESIGN	11/21/2025
50%	DESIGN DEVELOPMENT	12/22/2025
100%	DESIGN DEVELOPMENT	03/06/2026
50%	CRG SUBMISSION	03/11/2026

No.	Description	Date
50%	SCHEMATIC DESIGN	10/10/2025
100%	SCHEMATIC DESIGN	11/21/2025
50%	DESIGN DEVELOPMENT	12/22/2025
100%	DESIGN DEVELOPMENT	03/06/2026
50%	CRG SUBMISSION	03/11/2026

**PZB**  
PZ26-12000002  
05/27/2026  
EXTERIOR ELEVATIONS  
A302